

Multilingual Version

[English](#)

[中文](#)

H.265 XVR SERIES

QUICK START

Please read instructions thoroughly before operation and retain it for future reference.

For the actual display & operation, please refer to your device in hand.



Complete
User Manual



Free PC CMS
software (CMS Lite)

1. EAZY NETWORKING SETUP



EaZy Networking is a free P2P cloud service to connect AVTECH devices to the Internet automatically by plug-and-play, enabling you to check the live view via your mobile device or laptop at anytime.

In most cases, the device is connected via P2P. Connection via the relay server is only applied to some complex environments such as the private IP-based network environment used by a large enterprise. There is no speed limitation of P2P connection. To obtain stable transmission, it's recommended to purchase our data plan of 1GB or 7GB. Each device will enclose a 2GB data plan for a free trial.

EaZy Networking could be configured via EagleEyes on an iOS / android device, or via Internet Explorer.

Note: The instructions below explain how to configure via the free mobile app, EagleEyes. To know how to configure via Internet Explorer, please check the complete user manual.

Before using this function, make sure:

- This recorder is connected to a switch or router, and the switch or router is ready for Internet connection.
- The network icon on the bottom right corner is , not .
- You have an iOS / Android mobile device with EagleEyes installed.

1.1 Via EagleEyes on iOS / Android Device


1.1.1 Recorder Setup

Step1: Go to **MENU** → **NETWORK** → **WAN**. Set **NETWORK TYPE** to **DHCP**, and make sure the network icon on the bottom right corner is changed from  to .

Note: **DHCP** allows your router to assign an IP address for your device automatically. There are also **STATIC** and **PPPOE** to choose for the network type. Please choose the one needed for your network environment and get the information needed from your installer or network service provider.

WAN	WAN	
DDNS	NETWORK TYPE	DHCP <input checked="" type="checkbox"/>
E-MAIL	IP	192.168.1.112
FTP	GATEWAY	192.168.1.254
EaZy	NETMASK	255.255.255.0
	PRIMARY DNS	168.95.1.1
	SECONDARY DNS	139.175.55.244
	PORT	88
	INTERNET AVAILABILITY ADDRESS	www.google.com
	MAC 00:0E:53:EC:A7:B4	

Step2: In the same menu, select **EaZy**. Enable EaZy Networking, and leave this page open. You'll need to scan the QR code later.

LAN	EaZy	
DDNS	ENABLE EAZY NETWORKING	ON
E-MAIL	 MAC: 000e53eca7b4 UUID: E736DCBF-D4BB-4CA8-86FD-62658E2ECEC1 PORT: 80 EAZY NETWORKING OFFLINE	
FTP		
EaZy		

1.1.2 EagleEyes Setup

Two options can be chosen for EaZy Networking: **EaZy** and **QR Code**. **EaZy** is used for both recorders and IP cameras while **QR Code** is used only for recorders.

When a device is configured to the internet via **EaZy**, the person who configures the device has the administrator permission of this device and also has the power to assign who can access the device remotely, by the web browser of Internet Explorer or the mobile app of EagleEyes.

When a device is configured to the internet via **QR Code**, everyone has the right to access the device as long as he/she is able to scan the QR code of the device. However, he/she can only access the device via the mobile app of EagleEyes. Internet Explorer is not supported.

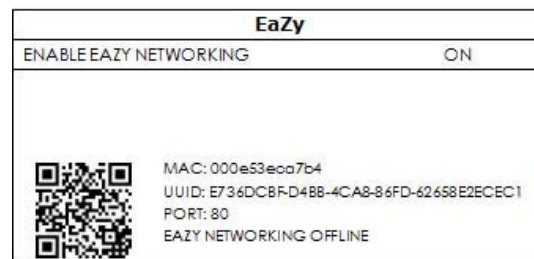
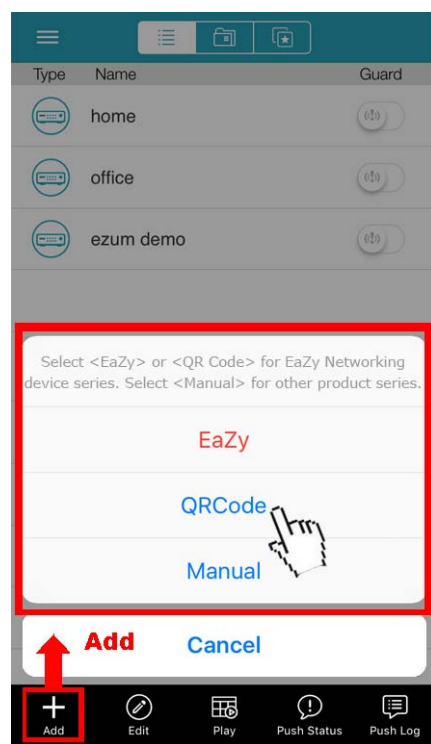
By QR Code

Step1: Open EagleEyes on your mobile device, and select **Add** on the bottom. Then, click **QR Code**.

Step2: Scan the QR code shown on your recorder, and enter the title of this device and its user name and password.

Step3: Make sure you see the device type when you tap **Get Type**. If not, the device is not connected properly. Then, Tap **Apply** to complete the process and you're ready to see the live view.

Note: For the first time to connect your device to the internet, the default user name and password are both **admin**. If it's been configured before, make sure you've known its current user name and password since they may be changed for security purpose.

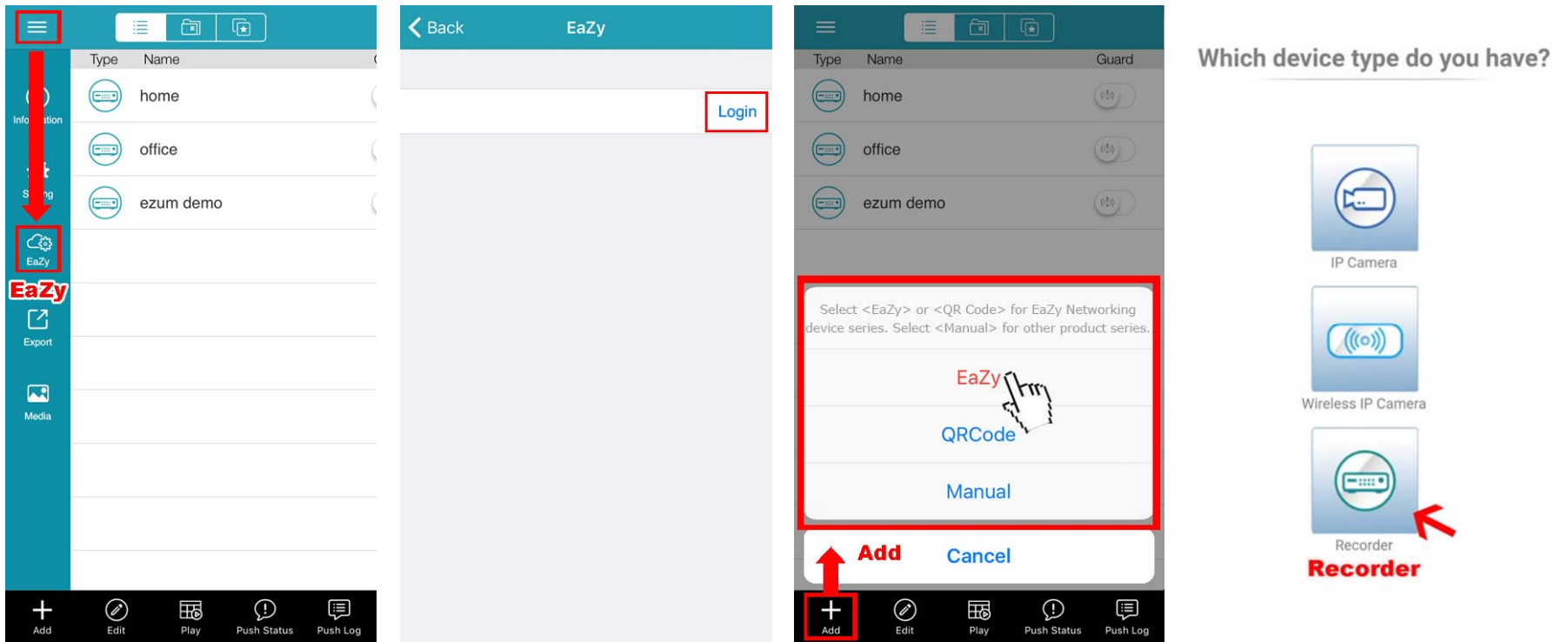



By EaZy

Step1: Open EagleEyes on your mobile device, and select "... " on the top left corner in the address book. Then, click **EaZy**.

Step2: Click **Login** and register an account for "Cloud Service". If you've got an account, please just log in.

Step3: Go back to the address book and click **+** to add a new device. Select **EaZy**, and choose the recorder icon to continue.



Step4: Click  in the section of **MAC address** to open the QR code scan page, and scan the QR code on the recorder screen mentioned in Step2. The MAC address will be filled automatically. Fill in the Captcha code manually, and click **Apply**.

Step5: Follow the on-screen instruction to finish the rest of the settings, and see if this device is added successfully to the address book as a cloud device.

At the same time, you'll be prompted to confirm if you want to remove the default user name and password.

- When the default user name and password are removed, you can **ONLY** use the user name and password of the cloud service to access this recorder locally and remotely. If you forget the user name and password of the cloud service, you could only reset the recorder and do all configurations again.
- When the default user name and password are kept, other people might be able to access this recorder if they know the default user name and password of this recorder.

Confirm if you want to keep the default account to continue, and return to the address book. You'll see the newly-added device in the address with a cloud icon on it.



Step6: Click the newly-added device and see if you could access successfully.

2. CONNECTION

2.1 Hard Disk Installation

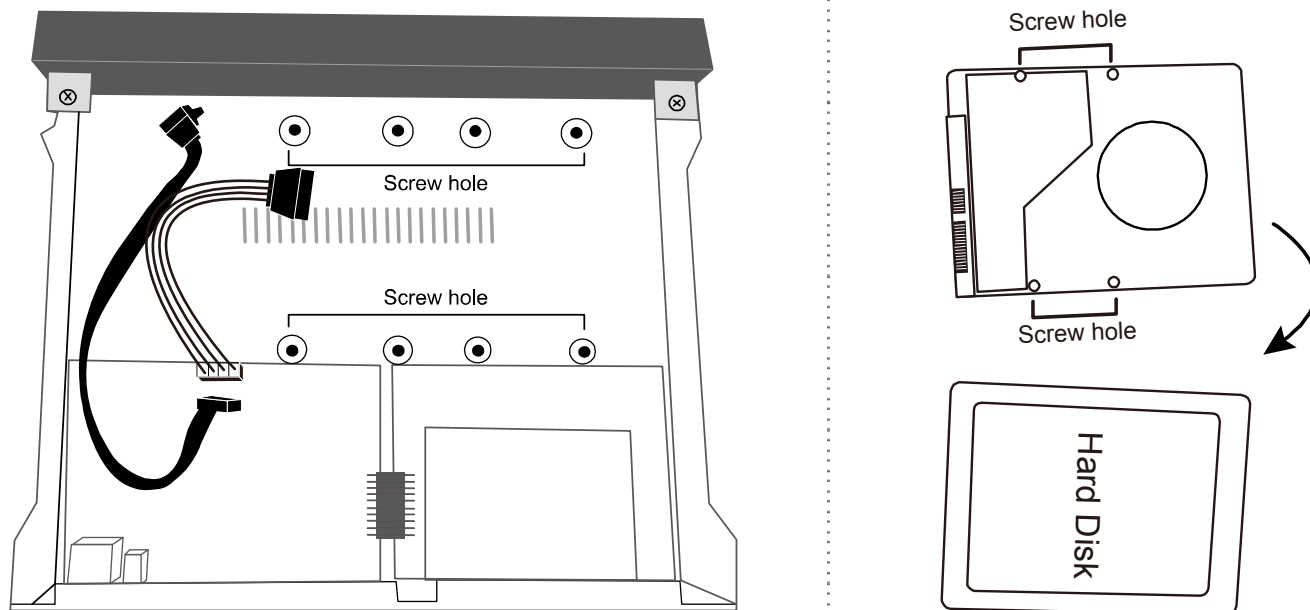
Note: The illustrations below are using a 4CH model as an example. The methods of how to install a hard disk are the same for all models.

Note: It's necessary to install a hard disk first before firmware upgrade to ensure the upgrade process works properly.

Step1: Remove the top cover, and find where to install a hard disk on the recorder.

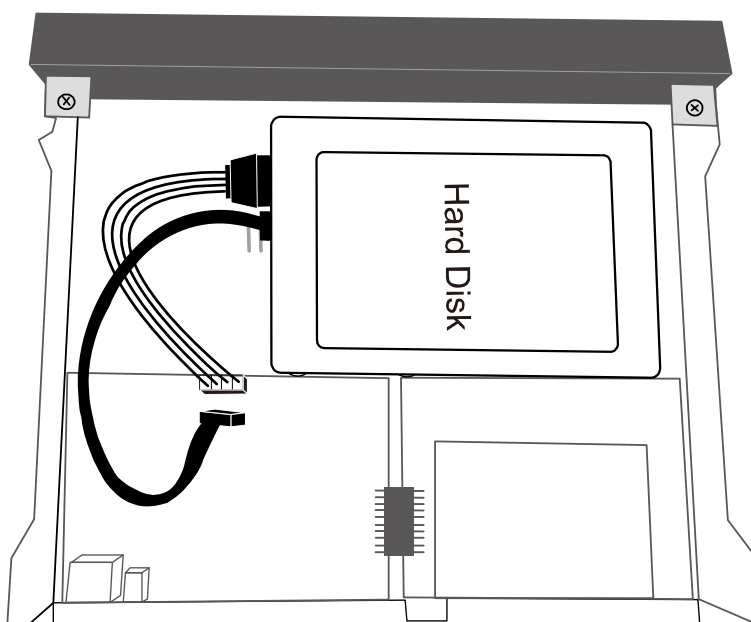
Step2: Get a compatible hard disk. With the PCB side facing down, find the screw holes on the recorder base, and place the hard disk in the recorder.

Note: To use a green hard disk, use **ONLY** the hard disk designed especially for surveillance to ensure the device works properly.



Step3: Connect the data bus and power cable for the hard disk.

Step4: Align the screw holes on the base and the hard disk. Then, fasten the hard disk on the base with the supplied screws from the bottom side of the recorder.



Step5: Replace the top cover and fasten the screws you loosened in Step1.

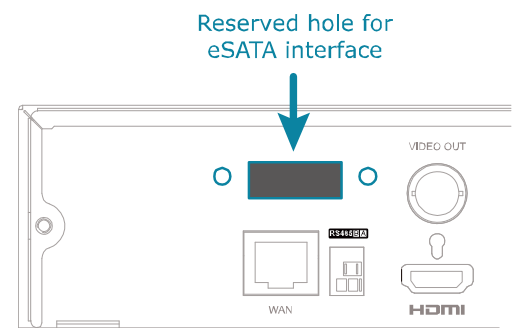
Step6: Remove the protective film on the bottom of the recorder if any to ensure the heat dissipation can work normally.

Add eSATA interface with optional SATA-to-eSATA cable

Note: The illustrations below are using a 16CH model as an example. The methods of how to install the cable are the same for all models which support this feature.

Step1: Check the specifications of your recorder and see if it supports this feature. If yes, find the reserved hole on the rear panel of your recorder as illustrated on the right.

Step2: Remove the top cover of the recorder to reveal its main board. Remove the thin piece of metal that block the reserved hole. Then, remove the SATA cable on the board.



Note: It will consume one SATA port to add an eSATA interface on the mainboard of your recorder, which means you'll lose one hard disk which can be **installed** inside your recorder.

Step3: Get a SATA-to-eSATA cable and connect it to the board as illustrated below.

Note: The SATA-to-eSATA cable is optional and need to purchase separately.

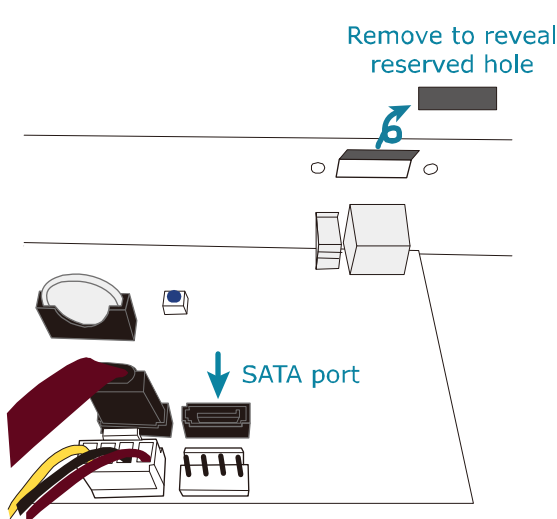


Figure 1

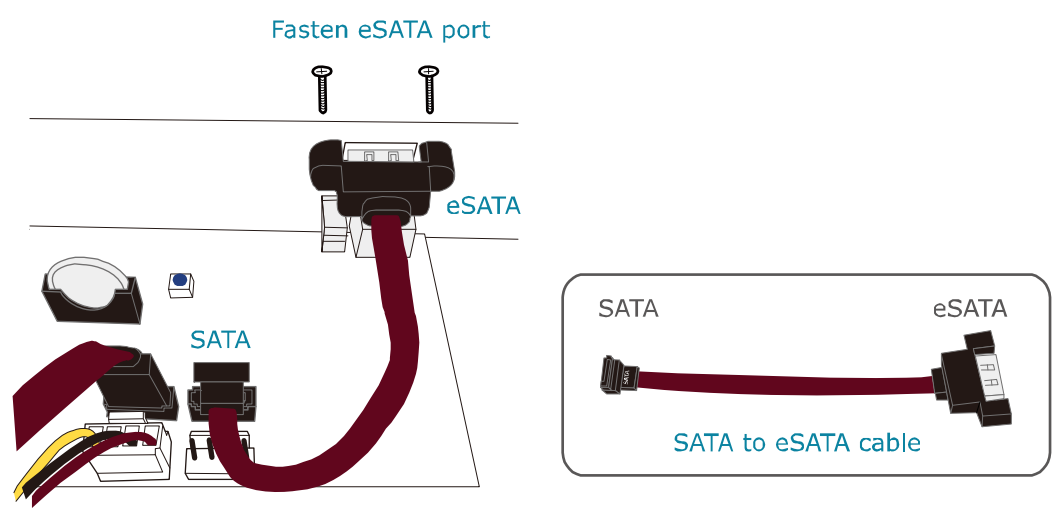


Figure 2

2.2 Hard Disk Mounting

Power on your recorder and wait till the initialization is completed. Then, check the hard disk indicators on the front panel to make sure each hard disk installed is detected.

Right click the mouse to exit from the full screen mode. Click **MENU** → **STORAGE** to see if all hard disks you inserted are detected, and click one by one to mount them. Wait till the hard disk is mounted and the status shows **READY**. When you're prompted to clear the hard disk, choose **YES**.

2.3 Camera Connection

Install the camera on the wall or ceiling based on your installation environment and camera type. For installation details, please refer to the user manual of your camera.

HD CCTV camera & our brand's speed dome camera

Step1: Connect the coaxial cable to the recorder.

Step2: Get a regulated adapter to connect the camera and power it on.

Other brand's speed dome camera

Note: The recorder must support RS485 connection to connect a speed dome camera. Please check the specifications of your recorder for details.

Step1: Connect the coaxial cable to the recorder.

Step2: Find where the connectors of RS485-A and RS485-B are located on the recorder rear panel, and follow the instructions of your camera manual to connect to the recorder. Then, power on the camera.

Step3: On the recorder side, right click to show the main menu, and go to **MENU** → **PERIPHERAL** → **DEVICES** to set the camera.

- a) Select the device to **PTZ**.
- b) Set the ID to the value the same as the one set in the camera.
- c) Select the protocol to **P-P**, **P-D**, **S-T** or **S-E**.

Note: **P-P** and **P-D** are protocols used Pelco, and **S-T** and **S-E** are protocols used by Samsung.

- d) Set the baud rate to the value the same as the one set in the camera.
- e) Set the interface to **RS485**.

LOCAL		DEVICES									
JOYSTICK											
DEVICES		CHANNEL TITLE	DEVICE	ID	PROTOCOL	RATE	INTERFACE				
		CH1	PTZ	1	P-P	9600	RS485				
		CH2	PTZ	0	NORMAL	2400	COAXIAL				
		CH3	PTZ	0	NORMAL	2400	COAXIAL				
		CH4	PTZ	0	NORMAL	2400	COAXIAL				

IP Camera

Note: Check the specifications of your recorder and see if your recorder supports IP camera connection.

Step1: Prepare a switch / router, and connect the recorder and the IP camera to the router with RJ45 network cables.

Step2: Make sure your camera supports DHCP function to allow the connected router to assign an IP address to the camera.

If your camera doesn't support this function, please check its user manual to know how to manually change the IP address of your camera and make sure its IP address is in the same network segment as the one your router uses.

Step3: Power on the camera.

Step4: On the recorder's live view, choose **MENU** → **CAMERA** → **CONNECTION** to go to the setting page. For the channel to which you want to connect the IP camera, change the interface from **COAXIAL** to **IPCAM**.

CONNECTION												
CHANNEL TITLE	INTERFACE	EDIT	<input type="checkbox"/> ENABLE	URI	PORT	DEVICE TYPE	VENDOR	MODEL	STREAM PROTOCOL	METHOD	PATH1	PATH2
CH1	IPCAM		<input type="checkbox"/>	192.168.1.11	88	IPCAM	AVTECH		RTP-Unicast	TCP		
CH2	IPCAM		<input type="checkbox"/>									
CH3	COAXIAL		<input type="checkbox"/>									
CH4	COAXIAL		<input type="checkbox"/>									

BATCH

IP SEARCH

Step5: Choose **IP SEARCH** to go to the **IP SEARCH** page directly and start searching the connected IP cameras.

You'll see the list of every connected IP camera with its connection status to this device and MAC address.

Click to assign the camera to the channel automatically and choose **ADD** to complete.

IP SEARCH										
ASSIGN	EDIT	DEVICE TYPE	IP	NETMASK	GATEWAY	PRIMARY DNS	PORT	MAC	VENDOR	
<input checked="" type="checkbox"/>	CH2		IPCAM	192.168.1.12	255.255.255.0	192.168.1.1	8.8.8.8	88	00:0E:53:31:06:E5	AVTECH
<input type="checkbox"/>			IPCAM	192.168.1.12	255.255.255.0	0.0.0.0	8.8.8.8	88	00:0E:53:31:06:E5	ONVIF
<input type="checkbox"/>			IPCAM	192.168.1.13	255.255.255.0	192.168.1.1	8.8.8.8	88	00:0E:53:31:15:D1	AVTECH
<input type="checkbox"/>			IPCAM	192.168.1.13	255.255.255.0	0.0.0.0	8.8.8.8	88	00:0E:53:31:15:D1	ONVIF

3. CHANGE USER NAME AND PASSWORD

It's highly recommended to change the user name and password of this device to keep your account safe. Otherwise, any person could access this device if he knows the default user name and password.

If you didn't go through the setting wizard at the first place, you'll be prompted to change the user name and password:

WARNING
PLEASE BE ADVISED TO MODIFY THE DEFAULT ACCOUNT TO ENSURE YOUR INFORMATION SECURITY.
<input checked="" type="radio"/> MODIFY <input type="radio"/> REMIND ME LATER <input type="radio"/> DON'T REMIND ME ANYMORE
<input type="button" value="CONFIRM"/>

Choose **MODIFY** to start the change immediately.

To change later, select **MENU** → **ACCOUNT** → **USER LIST**, and choose to change the default user name and password for "admin".

USER LIST		
EDIT	USER NAME	GROUP
 	admin	SUPERVISOR

H.265 XVR 系列

快速設定

在使用本機前請務必詳細閱讀安全須知及操作說明，並保存此手冊以供日後參考。

產品畫面顯示與操作請以實機為主。

完整使用手冊及免費電腦版 CMS 軟體 (CMS Lite)，請掃描右側 QR code。



完整使用手冊



免費電腦版 CMS 軟體
(CMS Lite)

1. EAZY NETWORKING 設定

EaZy Networking 是一種免費的 P2P 雲端服務，可通過即插即用自動將本設備連接到網路，並可以隨時透過移動設備或筆記型電腦查看即時影像。

本裝置一般透過 P2P 連接，僅較複雜的環境應用會透過中繼伺服器傳輸，如：大企業使用的私人 IP 網路。大多數裝置皆透過 P2P 連接；部分大型企業因網路環境較為複雜，故採中繼伺服器連結。在 P2P 的連結上沒有速度限制。若是透過中繼伺服器傳輸，傳輸流量最高可達 10FPS@512kbps。若想要有穩定的傳輸品質，建議您可以購買我們 1GB 或 7GB 的資費專案(每一個裝置皆包含 2GB 的傳輸流量供您免費試用)。

您可在 OS / android 裝置上，透過軟體 EagleEyes 進行設定，或直接在電腦的 Internet Explorer 上操作。



註： 以下說明如何透過行動裝置軟體 **EagleEyes** 進行設定，相關 **IE** 設定辦法請查看完整版操作手冊。.

在使用此功能之前，請先確認：

- 本裝置已連接到一台交換機或路由器，且該交換機或路由器可設定連線上網。
- 螢幕右上方的網路圖示為 ，不是 。
- You have an iOS / Android mobile device with EagleEyes installed.

1.1 使用 EagleEyes 在 iOS / Android 行動裝置進行設定


1.1.1 錄放影機設定

步驟 1: 按滑鼠右鍵顯示主目錄選單，然後選擇【網路設定】→【WAN】。將【網路類型】設為【DHCP】，然後確認螢幕右上角的網路圖示是否從  變成 。

Note: **DHCP** 允許您的路由器自動為您的設備分配 **IP** 地址。尚有 **STATIC** 和 **PPPOE** 可供網路類型選擇。請依所需選擇一個網路環境，並從安裝人員或網路服務提供者獲取所需信息。

網路設定	網路設定	
DDNS	網路類型	DHCP <input type="button" value="v"/>
電子郵件	IP 位址	192.168.1.112
通訊協定	閘道	192.168.1.254
EaZy	網路遮罩	255.255.255.0
	主要 DNS	168.95.1.1
	次要 DNS	139.175.55.244
	連接埠	88
	可用網路位址	www.google.com
	MAC 00:0E:53:EC:A7:B4	

步驟 2: 在同一個目錄選單內，改選【EaZy】。啟動 EaZy Networking，然後將畫面停在此處。稍後要掃描 QR Code 條碼會用到。

區域網路	EaZy	
DDNS	啟動 EAZY NETWORKING	開啟
電子郵件	 MAC: 000e53eca7b4 UUID: E736DCBF-D4BB-4CA8-86FD-62658E2ECEC1 PORT: 80 EAZY NETWORKING OFFLINE	
通訊協定		
EaZy		

1.1.2 EagleEyes 設定

EaZy Networking 可以選擇兩個選項：EaZy 和 QR Code。EaZy 用於錄放影機和網路攝像機，而 QR Code 僅用於錄放影機。

當設備通過 EaZy 配置到網路時，配置設備的人員具有此設備的管理員權限，並且還可以通過 Internet Explorer 的 Web 瀏覽器或行動裝置上的 EagleEyes 設定誰可以遠端訪問設備。當設備通過 QR Code 配置到網路時，每個人都能訪問設備，只要他/她能夠掃描設備的 QR Code。但是，他/她只能透過行動裝置的 EagleEyes 訪問該設備。不支援 Internet Explorer。

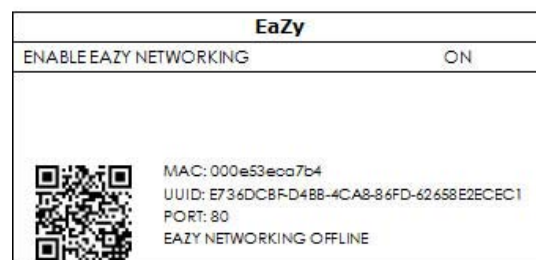
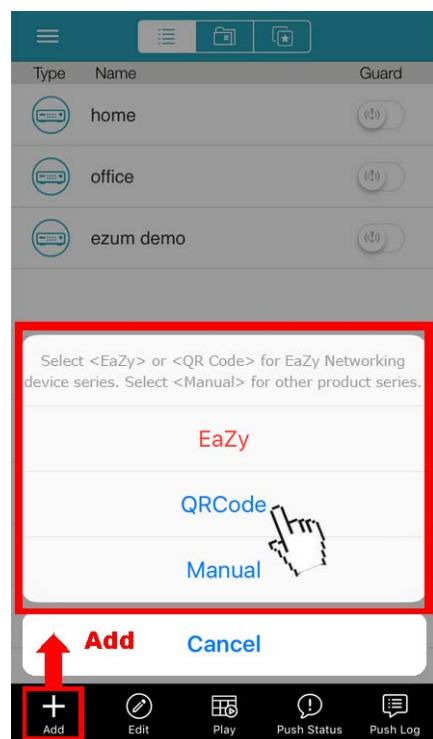
透過 QR Code 設定

步驟 1: 開啟行動裝置的 EagleEyes，並選擇底部的新增。然後，點擊 QR Code。

步驟 2: 掃描錄放影機上顯示的 QR Code，然後輸入此設備的標題及其用戶名和密碼。

步驟 3: 點按“獲取類型”時，請確保看到設備類型，否則，就是設備連接不正確。然後，點擊“應用”以完成安裝過程，您就可以看到即時影像了。

Note: 第一次將設備連接到網路時，預設用戶名和密碼都是 admin。如果之前已安裝過，請確保您已知道其當前用戶名和密碼。

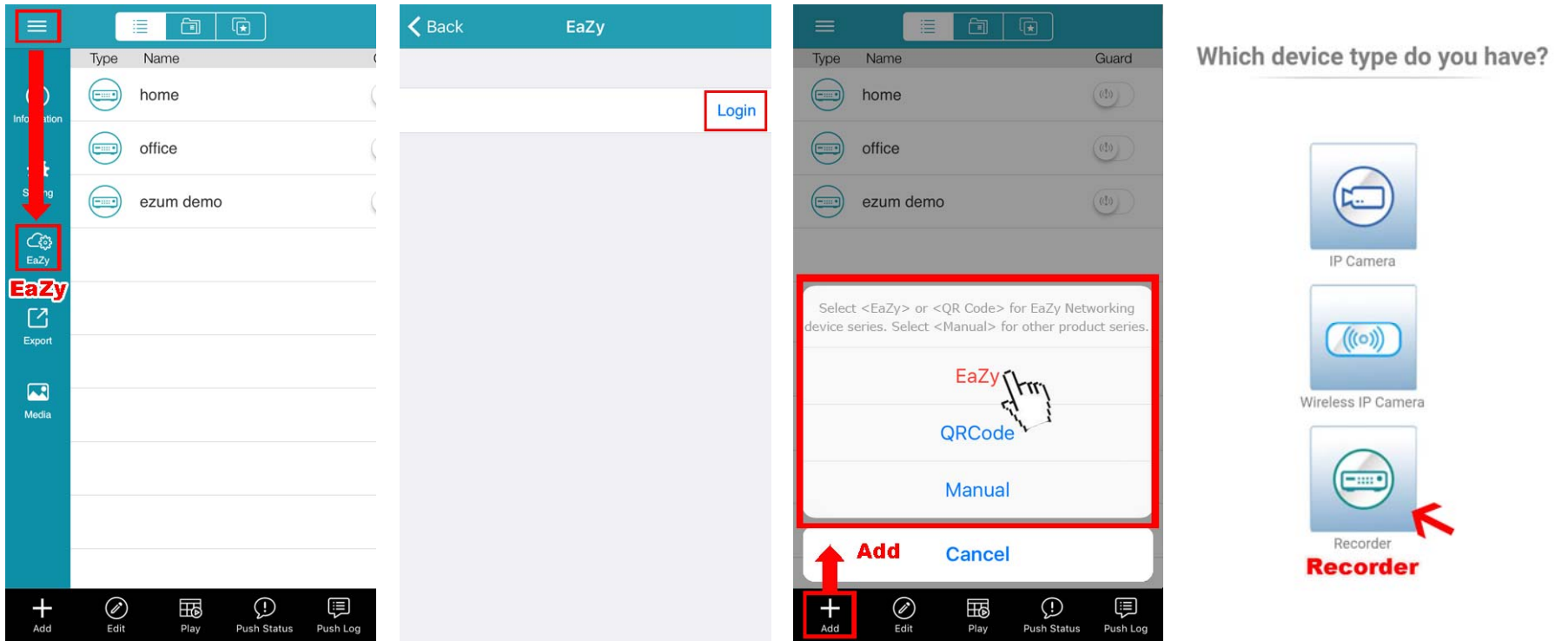



透過 EaZy 設定

步驟 1: 開啟行動裝置的 EagleEyes，然後選擇通訊錄左上角的“...”。然後，點擊 EaZy。

步驟 2: 點擊“登錄”並註冊“Cloud Service”帳戶。如果您有帳戶，請登錄。

步驟 3: 返回地址簿，然後點擊 “+” 添加新設備。 選擇 EaZy，然後選擇錄放影機圖標繼續。



步驟 4: 在 MAC 地址部分點擊  打開 QR Code 掃描頁面，掃描步驟 2 中提到的記錄器屏幕上的 QR 碼。MAC 地址將自動填寫。

手動填寫驗證碼，然後單擊“應用 Apply”。

步驟 5: 按照螢幕上的說明完成其餘設置，並查看此設備是否已成功添加到地址簿中作為雲端設備。同時，系統將提示您確認是否要刪除預設用戶名和密碼。

- 刪除預設用戶名和密碼後，您只能使用雲端服務的用戶名和密碼在本機端和遠端訪問此錄放影機。如果您忘記了雲服務的用戶名和密碼，則只能重置錄放影機並再次執行所有配置。
- 確認是否要繼續保留預設帳戶，然後返回通訊錄。您將在通訊地址中看到新添加的設備，上面有雲端圖標



步驟 6: 點選新加入的裝置，確認是否可正常連線並看到畫面。

2. 連接與設定

2.1 硬碟安裝

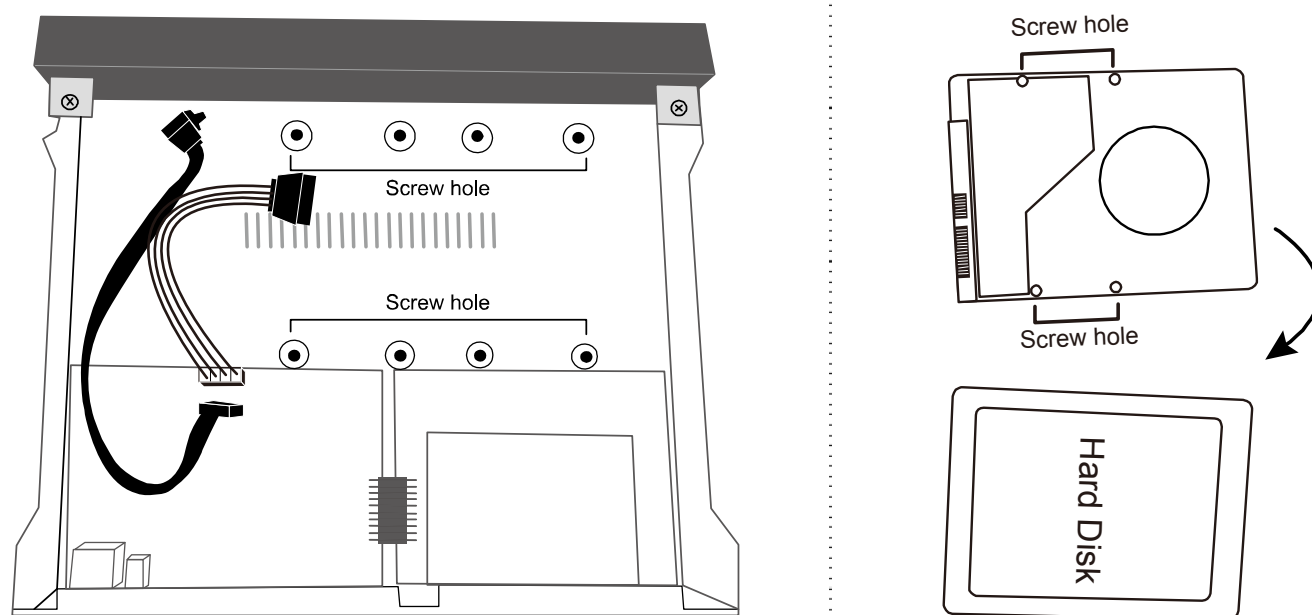
Note: 以下插圖使用 4CH 型號作為示例。對於所有型號，如何安裝硬盤的方法都是相同的。

Note: 在軟體升級之前必須先安裝硬盤，以確保升級過程正常運行。

步驟 1: 卸下上蓋，找到在錄放影機上安裝硬盤的位置。

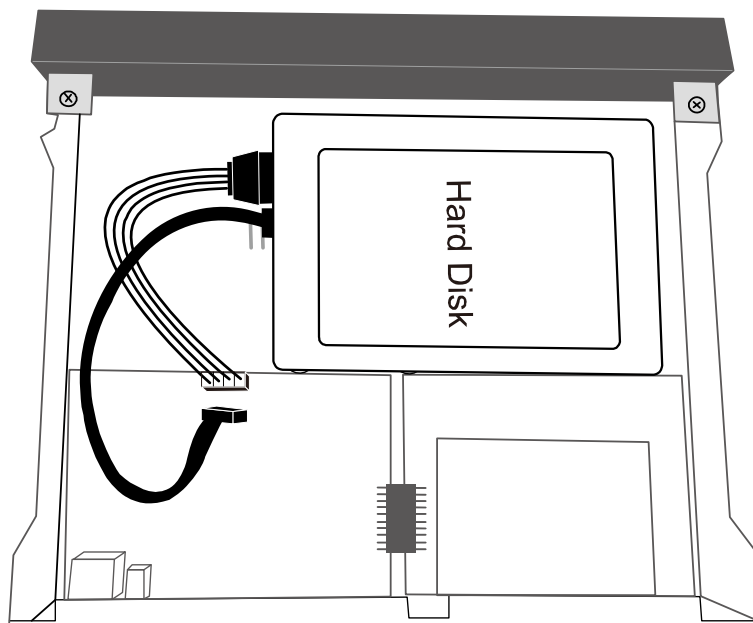
步驟 2: 取得相容的硬盤。將 PCB 面朝下，找到錄放影機底座上的螺絲孔，然後將硬盤放入錄放影機。

Note: 請僅使用專為監控而設計的硬盤，以確保設備正常運作。



步驟 3: 接上連接硬盤的數據線和電源線。

步驟 4: 將底座和硬盤上的螺孔對齊。然後，使用錄放影機底部提供的螺絲將底座上的硬盤固定。



步驟 5: 裝上上蓋並鎖緊在步驟 1 中鬆開的螺絲。

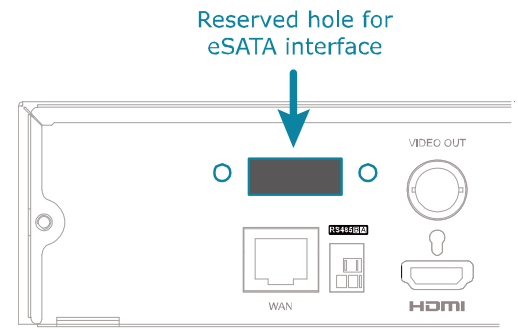
步驟 6: 取下錄放影機底部的保護膜，以確保散熱正常。

選配帶有可選 SATA-to-eSATA 電纜的 eSATA 接口

Note: 下圖以 16CH 型號為例。對於支援此功能的所有型號，安裝電纜的方法相同。

步驟 1: 檢查錄放影機的規格，看它是否支持此功能。如果是，請找到錄放影機後面板上的保留孔，如右圖所示。

步驟 2: 取下錄放影機的上蓋，露出主板。並取下阻擋預留孔的薄金屬片。然後，卸下主板上的 SATA 電纜。



Note: 此功能它會消耗一個 SATA 端口在錄像機的主板上添加一個 eSATA 接口，這意味著你將丟失一個可以安裝在錄放影機內的硬碟空間。

步驟 3: 取得 SATA-to-eSATA 電纜並將其連接到電路板，如下圖所示。

Note: SATA-to-eSATA 電纜是選配的裝置，需要額外單獨購買。

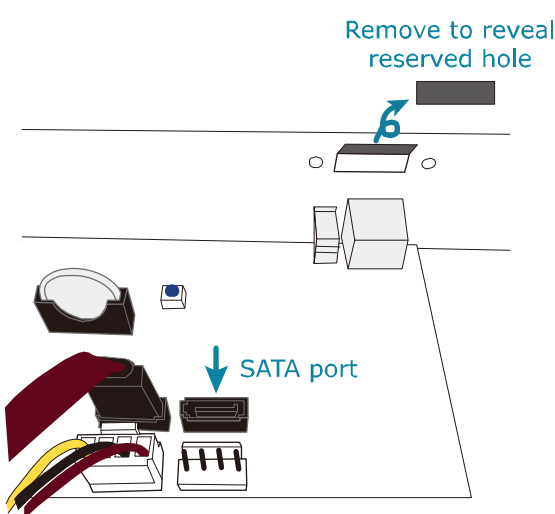


Figure 1

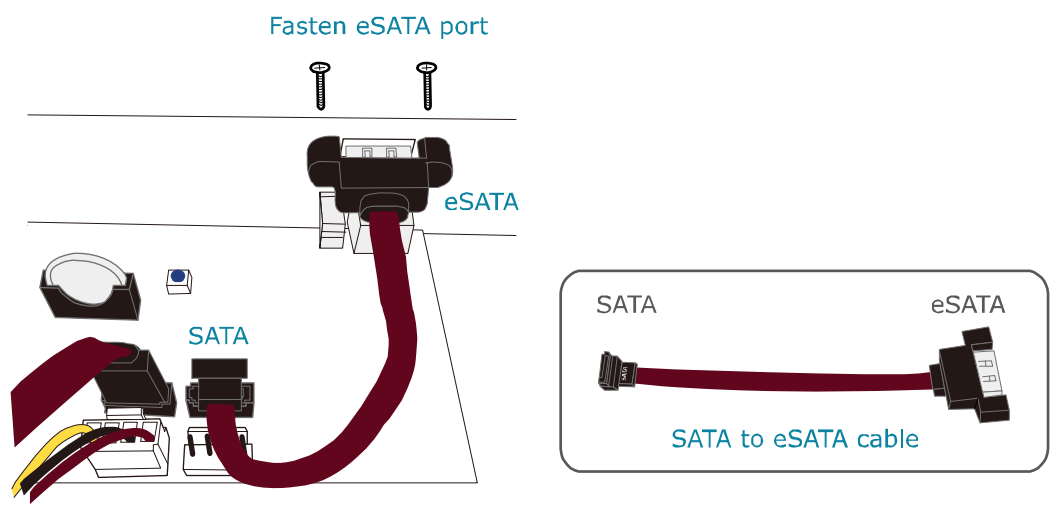


Figure 2

2.2 硬碟安裝

打開錄放影機電源，等待初始化完成。然後，檢查前面板上的硬盤指示燈以確保檢測到安裝的每個硬碟。

右鍵點擊滑鼠以退出全銀幕模式。點擊 MENU→STORAGE 以查看是否檢測到您插入的所有硬碟，然後逐個單擊以安裝它們。等到硬碟安裝完畢，狀態顯示 READY。當系統提示您清除硬碟時，請選擇“是”。

2.3 攝像機連線設定

根據您的安裝環境和攝像機類型將攝像機安裝在牆壁或天花板上。有關安裝的詳細信息，請參閱相機的用戶手冊。

高解析 CCTV 攝像機和 AVTECH 的高速球攝像機

步驟 1: 將同軸電纜連接到錄像機。

步驟 2: 取得一個適當的變壓器，以連接相機並打開電源。

其他品牌的高速球型攝像機

Note: 錄放影機必須支援 RS485 連接才能連接高速球。有關詳細信息，請查看攝影機的規格。

步驟 1: 將同軸電纜連接到錄放影機。

步驟 2: 找到位於錄放影機後面板上的 RS485-A 和 RS485-B 的連接器，並按攝像機手冊的說明連接到錄放影機。然後，打開攝像機電源。

步驟 3: 在錄放影機一側，右鍵點擊以顯示主菜單，然後轉到目錄 **MENU** → 周邊設備 **PERIPHERAL** → 設備 **DEVICES** 以設定攝像機。

- a) 選擇設備到 PTZ。
- b) 將 ID 設為與攝像機中設置的值相同的值。
- c) 選擇 P-P，P-D，S-T 或 S-E 的協議。

Note: **P-P** 和 **P-D** 是使用的協議 **Pelco**，**S-T** 和 **S-E** 是三星使用的協議。

- d) 將鮑率(baud rate) 設置為與攝像機中設置的值相同的值。
- e) 將介面設置為 **RS485**。

LOCAL	DEVICES										
JOYSTICK											
DEVICES	CHANNEL TITLE	DEVICE		ID	PROTOCOL		RATE		INTERFACE		
	CH1	PTZ	▼	1	P-P	▼	9600	▼	RS485		▼
	CH2	PTZ	▼	0	NORMAL	▼	2400	▼	COAXIAL		▼
	CH3	PTZ	▼	0	NORMAL	▼	2400	▼	COAXIAL		▼
	CH4	PTZ	▼	0	NORMAL	▼	2400	▼	COAXIAL		▼

網路型攝像機

Note: 檢查錄放影機的規格，看看您的錄放影機是否支持 IP 攝像機連接。

步驟 1: 準備交換機/路由器，並使用 RJ45 網絡電纜將錄放影機和 IP 攝像機連接到路由器。

步驟 2: 確保您的攝像機支持 DHCP 功能，以允許連接的路由器為攝像機分配 IP 地址。

如果您的相機不支持此功能，請查看其用戶手冊，了解如何手動更改攝相機的 IP 地址，並確保其 IP 地址與路由器使用的 IP 地址在同一網段。

步驟 3: 打開攝相機電源。

步驟 4: 在錄放影機的即時影像視圖中，選擇目錄 **MENU** → 攝像機 **CAMERA** → 連線 **CONNECTION** 到設定頁面。對於要連接 IP 攝像機的通道，將接口從 **COAXIAL** 更改為 **IPCAM**。

CONNECTION												
CHANNEL TITLE	INTERFACE	EDIT	<input type="checkbox"/> ENABLE	URI	PORT	DEVICE TYPE	VENDOR	MODEL	STREAM PROTOCOL	METHOD	PATH1	PATH2
CH1	IPCAM	▼		<input type="checkbox"/>	192.168.1.11	88	IPCAM	AVTECH	RTP-Unicast	TCP		
CH2	IPCAM	▼		<input type="checkbox"/>								
CH3	COAXIAL	▼		<input type="checkbox"/>								
CH4	COAXIAL	▼		<input type="checkbox"/>								
										BATCH	IP SEARCH	

步驟 5: 選擇 **IP SEARCH** 直接進入 **IP SEARCH** 的頁面，開始搜索連接的 IP 攝像機。

您將看到每個連接的 IP 攝像機的列表及其與此設備的連接狀態和 MAC 地址。點擊 攝像機自動分配給頻道，然後選擇 **ADD** 完成。

IP SEARCH										
ASSIGN	EDIT	DEVICE TYPE	IP	NETMASK	GATEWAY	PRIMARY DNS	PORT	MAC	VENDOR	
<input checked="" type="checkbox"/>	CH2		IPCAM	192.168.1.12	255.255.255.0	192.168.1.1	8.8.8.8	88	00:0E:53:31:06:E5	AVTECH
<input type="checkbox"/>			IPCAM	192.168.1.12	255.255.255.0	0.0.0.0	8.8.8.8	88	00:0E:53:31:06:E5	ONVIF
<input type="checkbox"/>			IPCAM	192.168.1.13	255.255.255.0	192.168.1.1	8.8.8.8	88	00:0E:53:31:15:D1	AVTECH
<input type="checkbox"/>			IPCAM	192.168.1.13	255.255.255.0	0.0.0.0	8.8.8.8	88	00:0E:53:31:15:D1	ONVIF
								REFRESH	ADD	

3. 更改用戶名和密碼

強烈建議您更改此設備的用戶名和密碼，以確保您的帳戶安全無虞。否則，任何人都可以訪問此設備，如果他知道預設的用戶名和密碼。

若您沒有首先瀏覽設置嚮導，系統將提示您更改用戶名和密碼：

警告 WARNING	
PLEASE BE ADVISED TO MODIFY THE DEFAULT ACCOUNT TO ENSURE YOUR INFORMATION SECURITY. 請建議修改默認帳戶以確保您的信息安全。	
<input checked="" type="radio"/> MODIFY <input type="radio"/> REMIND ME LATER <input type="radio"/> DON'T REMIND ME ANYMORE	
CONFIRM	

選擇 **修改 MODIFY** 立即開始更改

要稍後更改，請選擇 目錄 **MENU** → 帳戶 **ACCOUNT** → 使用者名單 **USER LIST**，及選擇 更改預設用戶名和密碼“admin”。

使用者名單 USER LIST		
EDIT	USER NAME	GROUP
 	admin	SUPERVISOR